

WELCOME TO THE AIRPORT CONNECTOR ROAD PUBLIC HEARING!



August 15, 2024, 5:00 - 7:00 PM
Jerry Zucker Middle School Cafeteria
6401 Dorchester Road, North Charleston, SC 29418

PURPOSE OF THE PUBLIC HEARING

- Provide an update on the Airport Connector Road (ACR) project
- Present the Environmental Assessment (EA), including the Recommended Preferred Alternative and the Environmental Justice Mitigation Plan
- Ask for your comments and feedback

From 5:00 to 6:00 p.m., you will have the opportunity to view large displays of the project. Project team members will be available for questions. At 6:00 p.m., there will be a brief formal presentation about the project's purpose, need, potential impacts, and schedule, followed by a formal verbal comment session.

If you wish to make a verbal comment, please sign up between 5:00 and 5:55 p.m. at the sign-in table near the entrance. Each comment will be limited to 2 minutes.



Understand the project background, purpose & need, & timeline



Review the alternatives analysis & see the Recommended Preferred Alternative



Review projected traffic operations during peak hours



Understand the project's impacts and see your property in relation to the project



Understand and review the Environmental Justice Mitigation Plan



Review the Environmental Assessment (EA)



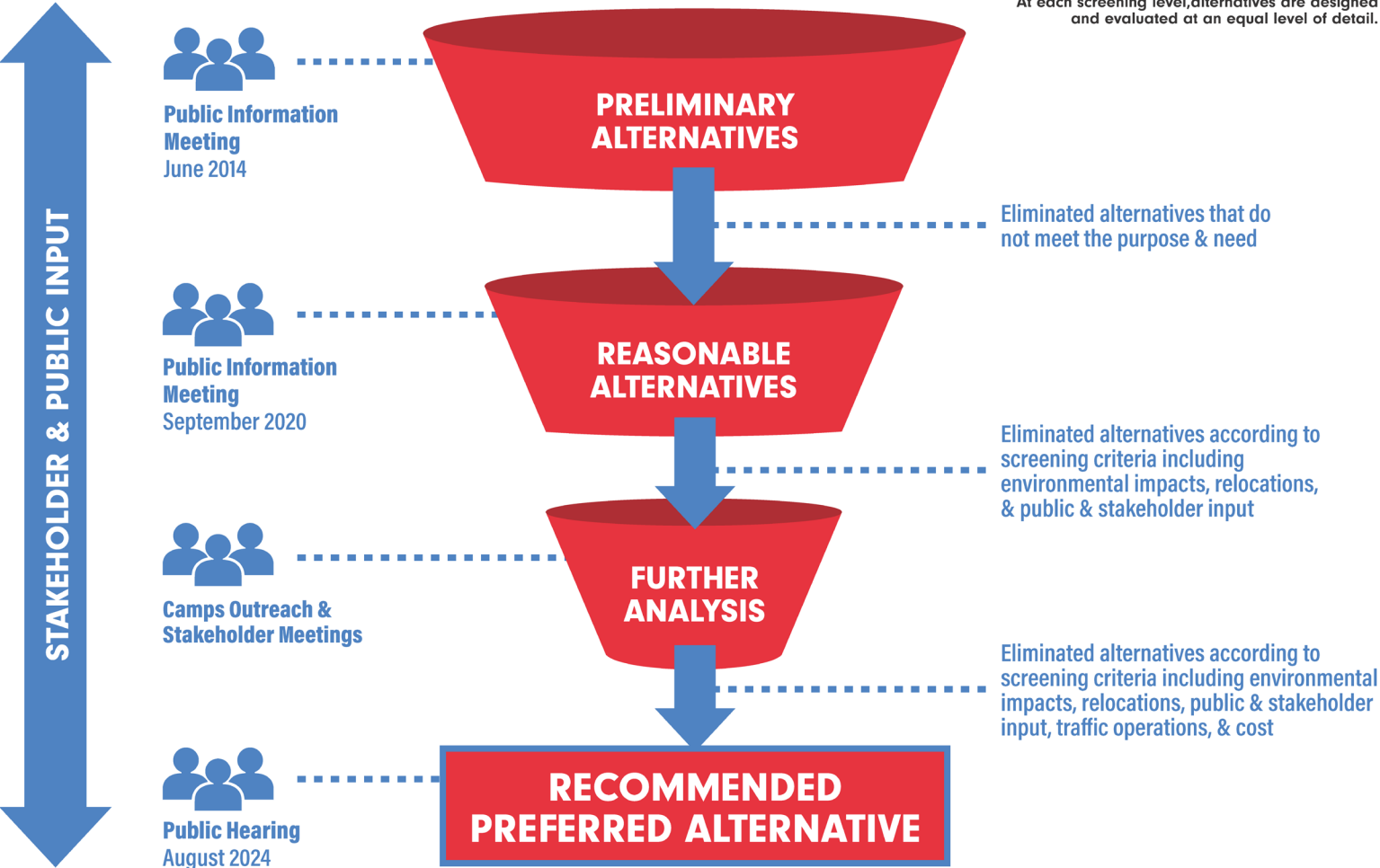
Provide your feedback & ask questions about the project process

PROJECT STUDY AREA + PURPOSE & NEED

The purpose of this project is to **separate airport and commuter traffic** from Boeing traffic while **improving mobility and operations** of local roadways within the project study area.



ALTERNATIVES EVALUATION PROCESS



RECOMMENDED PREFERRED ALTERNATIVE

The Recommended Preferred Alternative consists of ACR New Location Roadway Alternative 2A and I-526 at West Montague Avenue Interchange Alternative 3. A new location roadway alternative and an interchange alternative must be implemented together for the project to meet the purpose and need.

ACR Alternative 2A Highlights
ACR consists of a new 4-lane roadway with a landscaped median from the West Montague Avenue/I-526 Interchange to Charleston International Airport (CHS) at the intersection of International Boulevard and Porsche Boulevard. The roadway would extend along the Santee Cooper and Dominion Energy utility easement, paralleling an existing overhead transmission line. The shared-use path will connect to existing sidewalks along West Montague Avenue and parallel ACR within the power line easement connecting to Collins Park near Michaux Parkway.

The intersection of ACR and Michaux Parkway will be signalized. Michaux Parkway will be widened to 4 travel lanes from ACR to Dorchester Road, with minor improvements to the Dorchester Road intersection.

Interchange Alternative 3 Highlights
A diverging diamond interchange (DDI) will be constructed at I-526 and West Montague Avenue, with West Montague Avenue realigned. West Montague Avenue would curve to the northwest before intersecting with ACR to provide free-flow movement to ACR from the I-526 interchange.

Additional improvements include widening the I-526 mainline and constructing braided ramps from West Montague Avenue to International Boulevard. The improvements along I-526 also include widening the existing bridges over International Boulevard to be consistent with future corridor improvements planned as part of the SCDOT I-526 Lowcountry Corridor West project.

WHAT IS A DIVERGING DIAMOND INTERCHANGE?

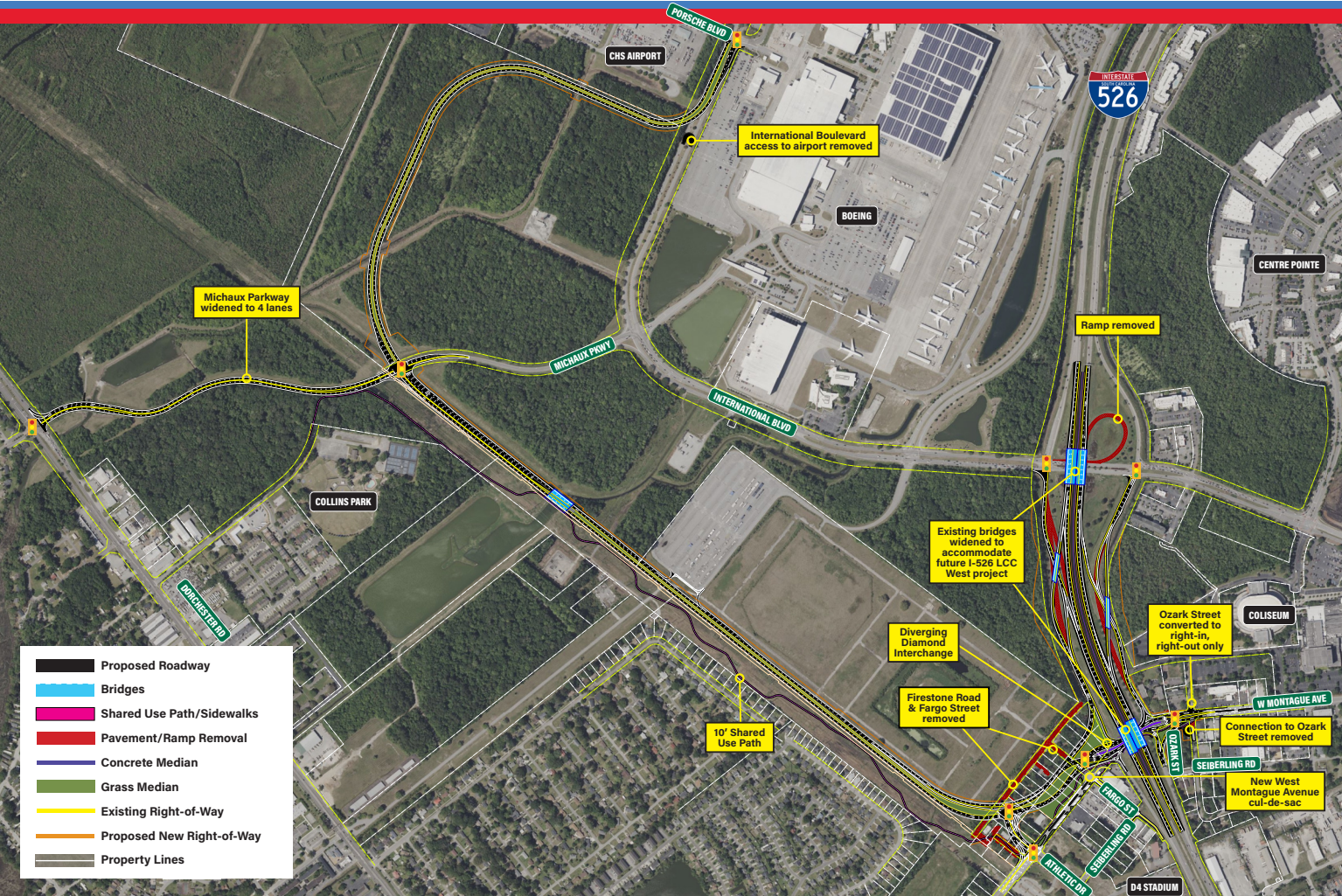
A DDI allows two directions of traffic to temporarily cross to the left side of the road. It moves high volumes of traffic through an intersection without increasing the number of lanes and traffic signals. This movement provides easier access to an interstate.

A DDI allows free-flowing turns when entering and exiting an interstate, eliminating the left turn against oncoming traffic and limiting the number of traffic signal phases. It is easy to navigate, eliminates last-minute lane changes, and provides better sight distance at turns, resulting in fewer crashes.

The design reduces congestion and better moves high volumes of traffic without the need to increase the number of lanes in an interchange.

ALTERNATIVES SCREENING

PRELIMINARY ALTERNATIVES AND SCREENING		REASONABLE ALTERNATIVES AND SCREENING		FURTHER ANALYSIS AND IMPACT EVALUATION	
RANGE OF ALTERNATIVES New Location Roadway ACR Alternatives ACR 1 ACR 2 ACR 3 ACR 4 I-526 at West Montague Interchange Alternatives Interchange 1 Interchange 2 Interchange 3 Interchange 4 Screening Criteria <ul style="list-style-type: none">Traffic & MobilityDirect Access to airport (CHS)Aviation Clear Zone ImpactsEnvironmental ImpactsRight of Way ImpactsPublic & Stakeholder Input		REASONABLE ALTERNATIVES ACR 2 Interchange 3 Alternatives Added ACR 2A ACR 2B ACR 2C <i>ACR Alternatives 2A, 2B, & 2C were added to evaluate different intersection types at the intersection of ACR & Michaux Parkway</i> Screening Criteria <ul style="list-style-type: none">Traffic & MobilityRight of Way ImpactsConstruction CostsEnvironmental ImpactsPublic & Stakeholder Input		REASONABLE ALTERNATIVES ACR 2A Interchange 3 Alternatives Added Interchange 3A Interchange 3B <i>Interchange Alternatives 3A & 3B were added to ensure there were no reasonable alternatives to avoid Environmental Justice populations & were screened according to their ability to avoid EJ relocations and meet the project's purpose & need</i> Screening Criteria <ul style="list-style-type: none">Environmental Justice ImpactsTraffic & MobilityRight of Way ImpactsEnvironmental ImpactsPublic & Stakeholder Input	
Alternatives Eliminated & Carried Forward ACR 1 ACR 2 ACR 3 ACR 4 Interchange 1 Interchange 2 Interchange 3 Interchange 4		Alternatives Eliminated & Carried Forward ACR 2 ACR 2A ACR 2B ACR 2C Interchange 3		Alternatives Eliminated & Carried Forward ACR 2A Interchange 3 Interchange 3A Interchange 3B	
		RECOMMENDED PREFERRED ALTERNATIVE ACR 2A Interchange 3 <i>The Recommended Preferred Alternative is a combination of a New Location Roadway ACR Alternative & an Interchange Alternative</i>			



WAYS YOU CAN PROVIDE A COMMENT

IN-PERSON

Anyone who wishes to comment verbally must sign up between 5:00 p.m. and 5:55 p.m. Each comment will be limited to 2 minutes. Verbal comments will not be responded to. Comment cards are available to provide written comments.

ONLINE

View the Public Hearing online & submit a comment using the online comment form at www.airportconnectorroad.com

BY EMAIL

Email your comments to the project team at info@airportconnectorroad.com

BY MAIL

Mail your written comments to:
Airport Connector Road
Attn: Sheila Parker, Project Manager
4045 Bridge View Drive, Suite B309
North Charleston, SC 29405

The official public
comment period
closes on
August 30, 2024

To access the Public Hearing online, please scan the QR Code. The online meeting is available to view 24/7. Comments will be accepted through August 30, 2024.



REVIEW THE ENVIRONMENTAL ASSESSMENT

The environmental assessment (EA) for the Airport Connector Road project follows the National Environmental Policy Act (NEPA) requirements and analyzes the project's potential impacts to the human and natural environment. The EA identifies the purpose and need of the project, develops alternatives that may meet the purpose and need, analyzes the environmental impacts of those alternatives, and recommends a preferred alternative.

The EA was approved by the Federal Highway Administration (FHWA) on May 22, 2024 and is available for review on the project website. FHWA will make a final decision on the project after the public hearing.

The Environmental Assessment (EA) is also available for review in hard copy at:
Charleston County Government Offices
4045 Bridge View Dr., N. Charleston, SC 29405

PROJECT TIMELINE

